

# THE RANGIURU BUSINESS PARK

December 2022

As we edge closer to the end of another year, it is my privilege to pen my first introduction for these newsletters as Quayside Chief Executive.

My first two months have been focused on understanding the business and to start meeting some of Rangiuru Business Park's stakeholders. I very much look forward to continuing that journey in the new year.

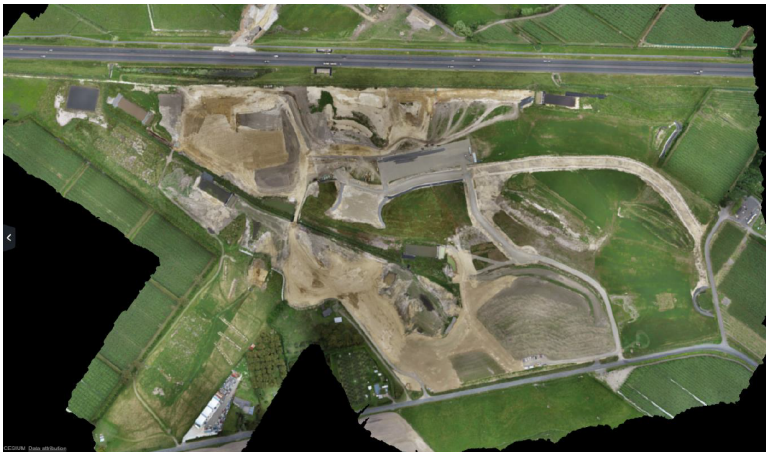
I have now visited the Rangiuru Business Park site twice and whilst the weather has not played ball, we are making good progress with earthworks on stage 1a. After the Christmas and New Year break, we will be back on site through to April with what we hope is a good run of fine weather.

Alongside the work that we are focussed on in stage 1a, the commencement of the interchange is a crucial infrastructure workstream, which as we announced in September, was awarded to Higgins. We are working closely with Waka Kotahi on this project and whilst there will be some lane closures and disruption on the TELTR, this will be well communicated in advance. When completed, this will serve as an important linkage from the TELTR into the Business Park and will enable those first tenants to connect through to the Eastern Bay of Plenty, Waikato, Tauranga and further afield.

My best wishes for a safe happy festive season.

**Lyndon Settle**  
Chief Executive Officer

*Progress in pictures...*



**17 minutes**  
to Port  
of Tauranga



**2.5 hour drive**  
to 50% of  
NZ's population



**Growth**  
Western Bay  
sub-region (2018)



**Employment growth**  
Western Bay  
sub-region (2018)



**Stage 1**  
35 hectares  
(approx.)

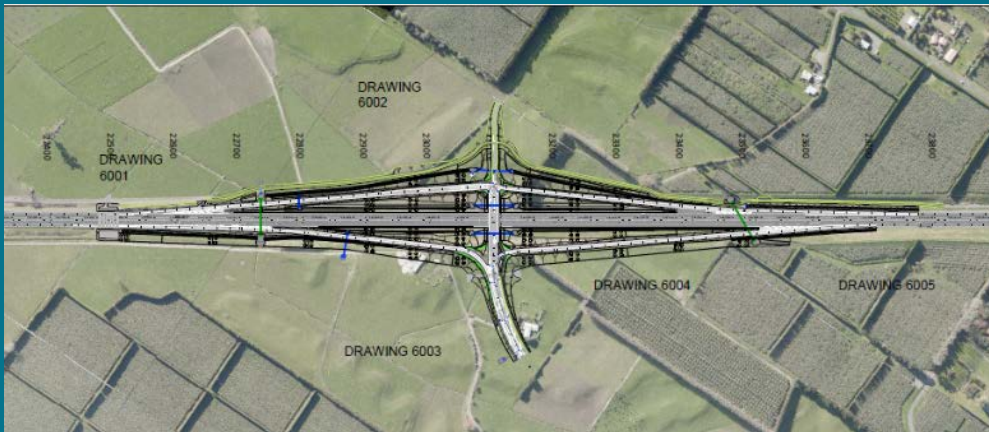
## REREEAMANU WIHAPI

Quayside and the Rangiuru Business Park were saddened to hear of the passing of Reverend Rereamanu Patana Wihapi, a rangatira of Tapuika iwi. Reverend Manu was laid to rest at the urupā of Tūhourangi Marae.

It was an honour for some of our kaimahi to attend the tangi for Koro Manu where he was not only acknowledged as a husband, father and koroua, but a respected man who has contributed and guided Tapuika along the journey with Quayside, to bring the vision of the Rangiuru Business Park to life whilst ensuring the history of the whenua is not forgotten.

His guidance and wisdom will be greatly missed.

“Kua hinga te tōtara i te wao nui a Tāne,ka tangi hotuhotu ngā manu. The great totara tree from the forest of Tane has fallen and the birds cry with its passing.”



## Rangiuru Business Park - Infrastructure

As part of Stage 1 we will be developing 50% of the total critical infrastructure such as water supply, wastewater, stormwater, roading and the aforementioned interchange.

Working closely with the territorial authorities and Waka Kotahi we will be installing some 6kms of wastewater pipes into the Te Puke Wastewater Treatment Plant, near 51 ha of stormwater ponds which will include extensive planting as part of treatment of the stormwater runoff, and additional pumps for water alongside the 35m long interchange over the Tauranga Eastern Link Toll Road.

These significant workstreams will ensure that when the time comes for vertical builds all that key infrastructure is in place allowing the Park to function and provide for its new business community.

